



Specifications

Trios Base

Crossbar to Floor Height	33 in. (84 cm) – 51 in. (129 cm)
Table Top to Floor Height	22 in. (56 cm) – 46 in. (117 cm)
Trendelenburg / Reverse Trendelenburg	10°
Lateral Tilt	25°
Base Width	32 in. (81 cm)
Base Length	110 in. (279 cm)
Retracted Base Length	68 in. (173 cm)

Trios Spinal Surgery Top

Table Top Length	84 in. (213 cm)
Table Top Width	17 in. (43 cm)
Patient Weight Capacity	650 lbs. (295 kg)

Trios Radiolucent Imaging Top

Table Top Length	84 in. (213 cm)
Table Top Width	21.5 in. (55 cm)
Patient Weight Capacity	650 lbs. (295 kg)



30031 Ahern Avenue
 Union City, CA 94587-1234 USA
 Telephone: 510-429-1500
 Toll Free: 800-777-4674
 Fax: 510-429-8500
 Outside USA: +1-510-429-1500
mizuho.com
newhipnews.com

Standard Components

Trios Spinal Surgery Top

- Towers (2)
- Spine Frame
- ProneView® Helmet and Mirror Platform
- Face Plate
- Tempur-Pedic® Medical Chest Pad
- 5-Way Articulating Arm Board with Bracket (2)
- Leg Board with 1" Tempur-Pedic® Medical Pad (2)
- Adjustable Leg Sling
- Buttocks Strap
- 60" (152 cm) Safety Strap
- 90" (229 cm) Safety Strap (4)
- Cervical Traction Vector
- Table Top Cover

Trios Radiolucent Imaging Top

- Towers (2)
- Radiolucent Imaging Platform
- 2" (5 cm) Tempur-Pedic® Medical Pad
- Supine Top Safety Strap
- 60" (152 cm) Safety Strap
- Trios 6" (15 cm) Side Rail Adapter (2)
- Table Top Cover

Ordering Information

Trios Base
REF 7803 or 7803AP (contains ACP)
 100-240 VAC, 50/60 Hz

Trios Spinal Surgery Top
 (Hip & Thigh Pad Sets Sold Separately)
REF 7943

Hip & Thigh Pad Set Options:
REF 7996 ACP Tempur-Pedic® 8-Piece Pad Set
 6957 Non-ACP Tempur-Pedic® 8-Piece Pad Set
 5997 ACP Tempur-Pedic® Combination Hip/Thigh Pad Set
 5939 Non-ACP Tempur-Pedic® Combination Hip/Thigh Pad Set

Trios Radiolucent Imaging Top
REF 7927



Patents Pending

Mizuho OSI's ISO13485 Quality Management System is certified by TÜV Rheinland® LGA Products GmbH.



Note: Mizuho OSI is constantly improving its products. All specifications are subject to change without notice. O-arm® is a registered trademark of Medtronic, Inc. • Tempur-Pedic® is a registered trademark of Tempur-Pedic North America, LLC • ProneView® is a registered trademark of Dupaco Inc. • Mizuho OSI is a Delaware Corporation. Manufactured in the USA.



Trios®

Simplified adjustability and positioning



Advanced Simplicity and Positioning

Trios[®] Surgical Table System

The **Trios[®] Surgical Table System** brings enhanced functionality to our original spinal platform used worldwide. Designed to meet the demands of today's surgical needs, the Trios[®] Spine and Imaging Tops are equipped to support patient weight up to 650 pounds while remaining fully radiolucent. Featuring powered floor locks, a unique table top mounting interface, and a streamlined 180 degree rotation mechanism, Trios[®] brings efficiency and ease of use to the operating room.

With a focus on enhanced safety and precision, Trios[®] offers a distinct user interface designed to complement the operating room workflow. This modern system features a table platform known for its patient positioning options for all spine and imaging procedures, including those requiring 180 degree rotation. Trios[®] provides confidence and control through an enhanced system created with the needs of both the user and patient in mind.

Procedures supported

- Laminectomies
- Decompressions
- Osteotomies
- Anterior / Posterior Fusions
- Surgical Correction of Deformities
- Anterior / Posterior Cervical
- Kyphoplasties
- Vertebroplasties
- IDET Surgeries
- Vascular Surgery
- Joint Imaging
- Pain Management



650 lbs.
weight capacity



Features

The Trios® two-column table base with interchangeable table tops creates the flexibility needed to support a variety of spine and imaging procedures. The open frame design of the spinal top provides the foundation for optimal prone positioning, while the versatility of the radiolucent imaging top allows for the desired supine or lateral set-up. Trios® provides a sophisticated platform based on 25 years of industry leading performance.

Carbon Fiber Construction

- Provides complete radiolucency
- Supports unrestricted C-arm and O-arm® integration
- Allows anterior/posterior, lateral & oblique views intraoperatively

Prone Positioning Benefits

- Improves surgical access and visualization at surgical site
- Reduces vena caval compression
- Minimizes epidural venous bleeding
- Provides customizable pad and component placement to meet individual patient needs



Powered Floor Locks

- One-touch engagement of floor locks using either the Hand Pendant or Auxiliary Panel
- Built-in safety mechanism prevents table from operating without floor locks engaged



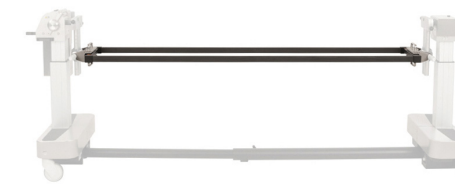
Tempur-Pedic® Medical Pad Technology

- Tempur-Pedic® Medical technology for all patient surfaces for supine and prone positioning
- Evenly distributes pressure load on patient during surgery
- Contours to patient anatomy, providing improved support
- Enhances patient comfort



Advanced Control Pad System™ (ACP)

- Optional built-in system automatically stimulates patient pressure points on hips and thighs
- Available for individual ACP hip and thigh pads and contoured ACP hip pads
- Choice of two oscillating cycles



Spinal Surgery Top



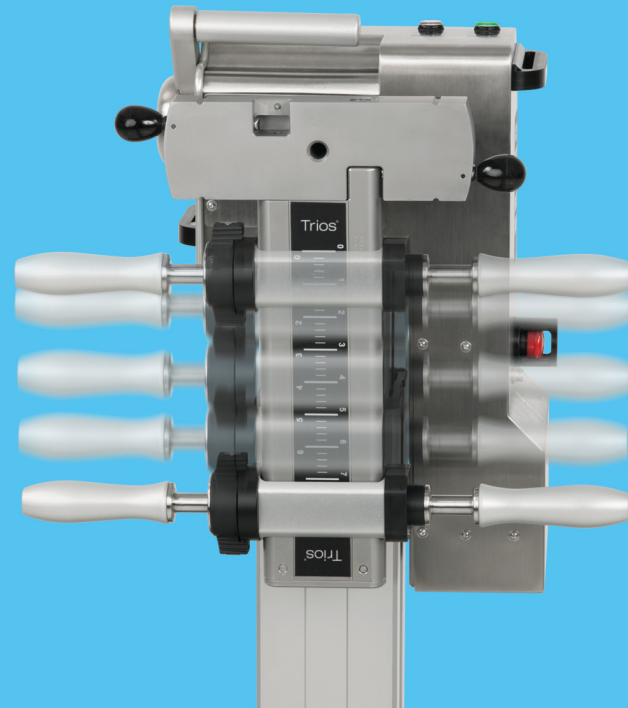
Radiolucent Imaging Top

Orthopedic Top Coming Soon!

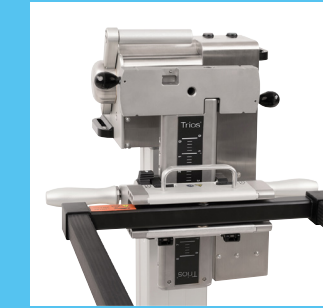
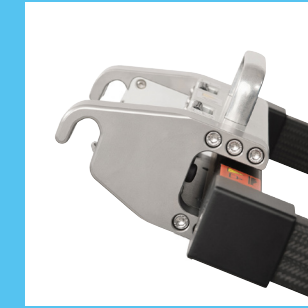
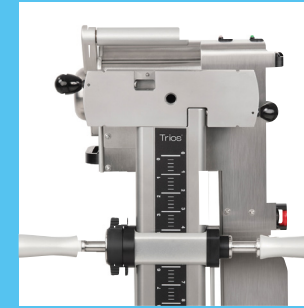
IntelliPENDANT® & Auxiliary Panel

- Display provides real-time information on table's height, lateral tilt and Trendelenburg position
- Pendant is equipped with two programmable memory positions
- Auxiliary Panel provides secondary source for controlling table motion



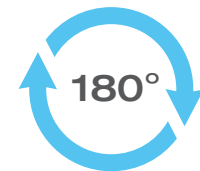


Tower and Ratchet System Enhanced Control and Adjustment



Secure Table Top Attachment

- New connection interface eliminates risk of misuse that could result in table top dropping
- Each tower easily fastens to the Base's crossbar to allow the table top to be attached
- Simple table top hook connection ensures secure attachment to the towers
- Adjustment of table top's position relative to the cross bar is readily achieved using tower's unique ratchet mechanism
- Table top position can be adjusted before and after patient transfer



Simple and Safe

180 Degree Rotation

- Facilitates safe and efficient rotations from supine to prone
- Enables completion of anterior / posterior procedures without use of additional tables

180° Rotation Handle

- Simplified execution for 180° rotation controlled by a one handle unlocking system
- Built-in safety mechanism requires two-staged action to release the lock
- Indicator lights at Head-End and Foot-End alert user to table's unlocked state



Supine Position



Patient Securely
Positioned For Rotation



Patient Safely
Rotated



Final Prone Position