

Order No. 18000000

ADVANTAGES



- Mains-independent operation thanks to powerful and environmentally friendly batteries (about 100 surgery cycles), quickly exchangeable via backup battery drawer
- Tilttable foot control via two 4-way joysticks plus activation switch allow sensitive and precise chair adjustment even after the surgeon is already aseptic
- Manual keypad with five individually programmable memo positions, reset button, auto-run function and battery level display
- The 3-D and longitudinally adjustable headrest element with head molding ensure safe and correct positioning of the patient's head
- Ample legroom for the surgeon - for optimized access to the patients head, also temporal



- Lightweight travel gear made of cast aluminum with four fully rotating double-run casters for spine friendly and easy rolling motion
- Optimized controlled handling of the chair by only a single person thanks to the electronically controlled barking system with "Steering Guide" function
- The materials and workmanship satisfy the most stringent hygienic requirements
- Activation/deactivation of the "Steering Guide" at the head and foot ends via manual keypad or micro-switches at the push handles
- Electronic wheel brake acting on four wheels
- Easy, mobile and user friendly handling



- The extension system prevents the patient from sliding down the chair
- Allows adjustment of the reclining surface to suit individual patient needs
- Very low access height





Manual keypad with 5 freely configurable memory positions, reset button, and auto-run function.



3-dimensionally and longitudinally adjustable headrest element with head molding.



Standard rails 25 x 10 mm for the attachment of a wide range of accessories.



Electronic braking system with "Steering Guide" function acting on all wheels.



Retractable push handles at the foot end allow direct patient repositioning from a stationary bed without any obstacles.



Battery drawer for easy and rapid battery changes.

EQUIPMENT



Push handles at the head and foot ends for easy maneuvering. "Steering Guide" buttons on every right push handle.



Easy recharging of the equipment thanks to charging adapter and integrated battery charger circuit board.



Extra security thanks to exchangeable battery drawer (changing system). Up to 100 operating circles per battery charge.

Lightweight aluminum travel gear with four fully rotating double casters.

Tiltable foot control element for sensitive chair adjustment.



Optical recognition of the wheel positioning function:



decelerated



directional



unlimited



e-drive system

- Electronic pushing aid,
very easy to use

Order No. 18000000 + 33160000

The ease of pushing

e-Drive system for effortless and rapid movement of the chair over long distances. The innovative optional e-drive system consists of a 5th wheel with drive motor. It serves as a pushing aid for easy forward and backward movement – with an extra range of 2 kilometers per battery charge.

The system's operation is identical to that of the “Steering Guide” system, via the respective push handles with potentiometer for infinite and precise speed adjustment. It is possible to integrate the system any time at a later date. Powerful yet gentle.



**We-drive
your OR**

*Easy to use and efficient!
Pushing aid for easy and
spine friendly forward and
backward movement.*



*Left push handle:
for forward and backward
movements.*



*Right push handle:
potentiometer for infinitely
adjustable movements at
millimeter accuracy.*



*“Steering Guide” micro-
switch (at the head and
foot ends, on the right)
integrated in the push
handle for directional
pushing.*



Folding-down push handle at the foot end with integrated "Steering Guide" micro-switch on the right push handle.



Push handle at the left head end with a lever for moving the treatment chair forward and back.



Push handle at the right head end with a potentiometer and "Steering Guide" micro-switch.

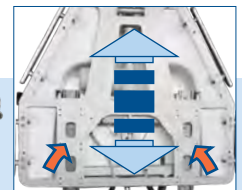


Made for your health

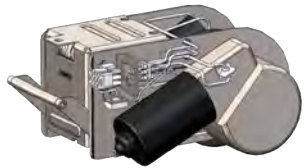
As a surgeon, you and your team are performing extremely strenuous physical and mental work. It is therefore sensible to reduce your stress load to a minimum and switch to the innovative treatment chair eyeForce. Create your own optimized working conditions and avoid unnecessary stress for your entire surgery team by setting up a workplace customized to your personal needs. In combination with the ergonomic surgeon's stool, surgiForce, eyeForce is the perfect working platform for surgeons and their teams in ophthalmic or micro-surgery.

Who would have thought it possible?

This is how far your staff pushes a load of 300 kilograms per year: approximately 70 meters per surgery round; 2.500 to 10.000 surgeries per year; up to 800 kilometers per year – »all in all an amazing feat!«



The SES extension system prevents patients from sliding while moving them from sitting to recumbent positions, thus obviating the need for patient repositioning. Additionally, the SES helps reduce the access height by 50 millimeters.



E-DRIVE

Order No. 33160000



BACKUP BATTERY DRAWER
incl. batteries

Order No. 33390000



PADDED ARM BOARD
with universal joint, incl.
mounting clamp

Order No. 30110000



SIDE PARTS
(right+left) swiveling incl.
locking, upholstered

Order No. 31020000



FLEXIBLE SURGICAL DRAPE
SUPPORT ROD
(mounting clamp 30900000
not included)
with oxygen connection

Order No. 30330000



FLEXIBLE SURGICAL DRAPE
SUPPORT ROD
(mounting clamp 30900000
not included)
without oxygen connection

Order No. 30320000



WRIST REST

incl. mounting plate
30130000, adjustable
Order No. 30140000



WRIST REST

incl. mounting plate
30130000, adjustable, tiltable
Order No. 30140005



HAND REMOTE BRACKET,
PVC

Order No. 30180009



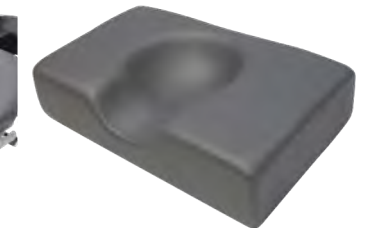
HAND CONTROL HOLDER
for attachment onto an I.V.
Pole ø 25/18 mm, PVC

Order No. 30270006



SIDE PARTS
(right + left) incl. quick-release
clamp for mounting on norm
rail, 580 x 200 mm

Order No. 33510050



HEAD FIXATION PILLOW
with hollow (rubins pillow),
41x25cm, height: 10 cm

Order No. 30220000

eyeForce

ACCESSORIES



HEAD PART BUMPER
stainless steel
Order No. 30280000



MONITOR ARM
stainless steel, swiveling, incl.
extendible I.V. Pole ø 25 mm
Order No. 30240000



MONITOR ARM
stainless steel, not swiveling,
incl. extendible I.V. Pole
ø 25 mm
Order No. 33340000



FOOT PART EXTENSION
attachable, incl. norm rail
Order No. 33510002



STEP
Order No. 33510042



FOOT PROTECTION FOIL
Order No. 33280000



OXYGEN CYLINDER HOLDER
Order No. 30720001



MOUNTING CLAMP
polished aluminium, with
quick clamp lever for norm
rail 25 x 10 mm incl. locking
device
Order No. 30900000



MOUNTING CLAMP
CNS
Order No. 30260000



MOUNTING PLATE
stainless steel for the wrist rest
30140000
Order No. 30130000



INSTRUMENT TABLE
50 x 30 x 1.5 cm, height-ad-
justable, swiveling, detachable,
incl. monitor arm
Order No. 30650003

eyeForce

REFERENCES

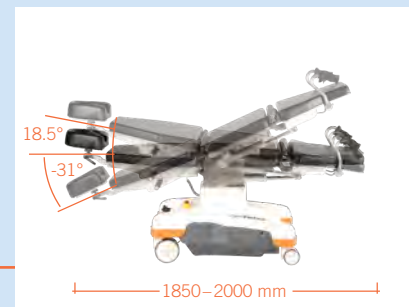
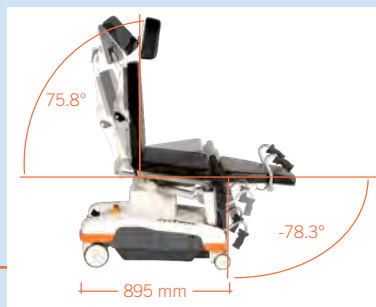


PENINSULA EYE SURGERY CENTER
DAVID F. CHANG, MD
LOS ALTOS, US



HOPITAUX ROBERT SCHUMAN
CLINIQUE ST. MARIE
ESCH-SUR-ALZETTE, LU

FURTHER REFERENCES: UFSK-OSYS.COM/REFERENCES



SPECIFICATIONS

Chassis

- Outside length 895 mm
- Outside width 662 mm
- Brake system acting on all four wheels
- Directional wheel guidance ("Steering Guide"), easily activated at the push of a button
- Caster diameter, electrically conductive \varnothing 150/100 mm
- Foot control element with joystick (total up/down, head up/down, back up/down, Trendelenburg up/down)
- Emergency stop button
- Optional pushing aid drive (e-Drive)
- With equipotential bonding connection

Lifting Column

- Max. lifting force 230 mm
- Max. patient weight 250 kg

Upper Frame

- 4-part support frame (head, back, seat, foot)
- Length 1,850–2,000 mm
- Width of upholstery 650 mm
- Width incl. norm rails 700 mm

- Headrest – stepless adjustment of length and angle $-31^{\circ}/+18.5^{\circ}$
- Backrest adjustment $0^{\circ}/+75.8^{\circ}$
- Footrest adjustment $0^{\circ}/-78.3^{\circ}$
- Trendelenburg/Reverse Trendelenburg $-23.7^{\circ}/+8.4^{\circ}$
- Height adjustment range 607–837 mm
- Standard stainless steel side rails on both sides 25 x 10 mm
- Removable upholstery, standard color in anthracite
- Tundra skai colors see color chart

Electronic Control

- Manual keypad with 5 individually programmable memory positions, auto-run function, reset button
- Foot control element 2 joysticks plus activation switch
- Optional pushing aid drive (e-Drive)

Battery unit

- Power supply-independent battery unit with 2 batteries (lead-gel), pollution free, maintenance-free, cadmium-free
- Quick-exchange battery drawer replaceable without tools
- Universal battery charger Input: 100-240 V, Output: 24 V

Operating Time Per Battery Charge

- Measured by operating circle (Prepare-Operate-Recover) 100Ps
- Quantity of operating circles depends on individual operation

Electromotive Drives

- Head, back, seat, foot, total up/down
- Trendelenburg/Reverse Trendelenburg

Hand control

- Memory controller with 10 buttons for head-, back-, seat-, leg – total up/down; 2 buttons for wheel direction control, 1 button for electronic brake, 1 easy entry button, memory button, on-off button, auto-run function
- 5 programmable presets
- Visual battery level indicator

Max. Load

250 kg

Weight

165 kg

Subject to technical modifications.